



Participant Information

SAFETY

- All participants must wear a helmet
- Inspect your bicycle and take a test ride prior to the event
- Review bicycle safety information and tips
- Traffic support is provided by local law enforcement, but no roads will be closed
- Cyclists must be able to ride 8 miles at 10-12mph without stopping

SCHEDULE

- Check-in is from 6:45am to 7:15am. Please arrive by 7am to have enough time to park and check in
- Cyclists will depart at 7:30am sharp
- There is a break at Belville Riverwalk Park for bathrooms and snacks
- Cyclists are expected to arrive back to Phoenix Park around 10am

PARKING

- Parking at Phoenix Park is limited
- If you know someone who is also participating in this event, please carpool to the park
- There is a park-and-ride lot at Food Lion at 1735 Reed Rd., 2.7 miles from Phoenix Park
- Volunteers will guide participants to parking spots upon arrival
- See Check-In Guide Map below

THE ROUTE

- The route of this ride takes place on roads with speeds up to 45mph and through major intersections. View the ride's map at gocoastnc.org
- Law enforcement will be on the route to provide traffic support

REGISTRATION

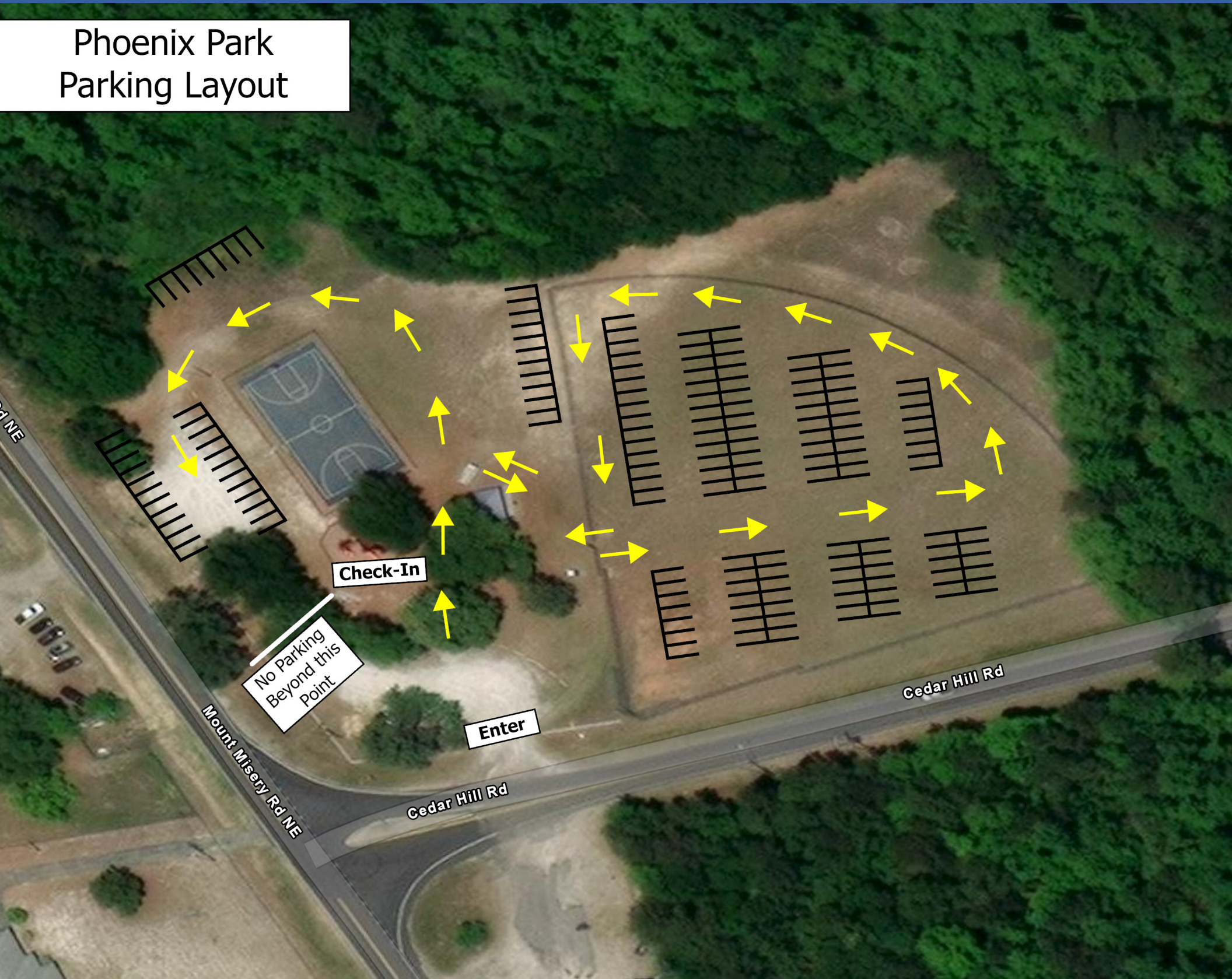
- Same-day registration will be available at no cost from 6:45am to 7:15am. All participants must be registered
- If you are no longer able to attend, please cancel your registration through Eventbrite prior to the event. See order confirmation email to cancel
- You do not need a printed copy of registration
- Ensure your registration includes all individual names of attendees

THE RIDE

- This ride is set at a casual pace (roughly 10-12mph)
- ONLY emergency transportation will be provided back to Phoenix Park
- Participants MUST stay with the group at the pace set by leaders. This includes no large gaps and no bunching up
- Participants of all ages are welcome, but MUST be able to ride 8 miles at 10-12mph without stopping
- The total distance of the ride is 16 miles, round trip

Check-In Map Guide

Phoenix Park Parking Layout



Remember to Be A Looker!

To learn more about bicycle safety visit
GoCoastNC.org/BeALooker

BE A LOOKER

Watch for Bikes and
Pedestrians

GO COAST

